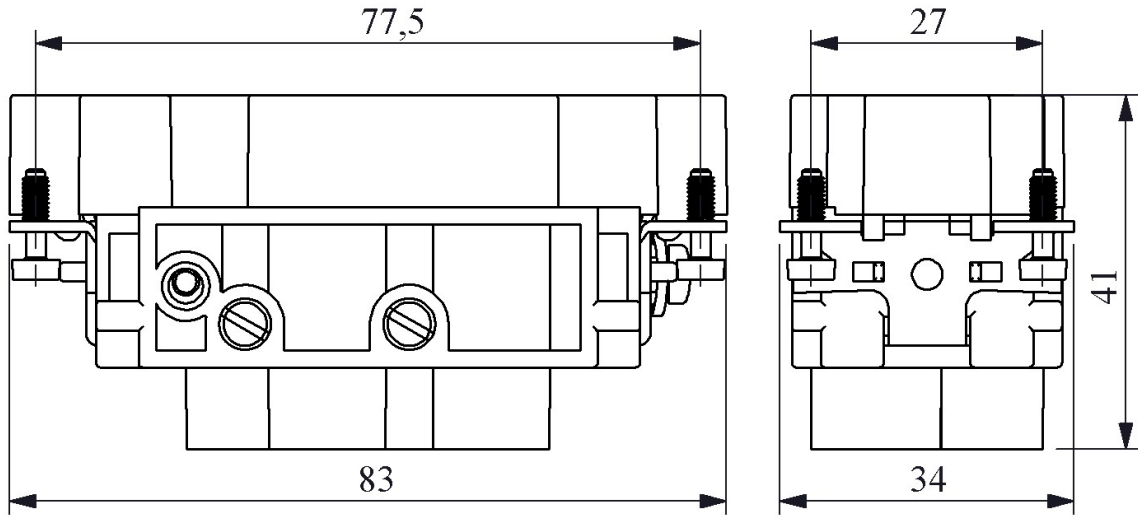



**EB0806CF00**

|  |                         |                       |
|--|-------------------------|-----------------------|
| <b>Print</b>                                 |                         | 1-6                   |
| <b>Operating Current</b>                     |                         | (4x80A)+(2x16A)       |
| <b>Product</b>                               |                         | Multipole             |
| <b>Type</b>                                  |                         | Insert Plug           |
| <b>Contact</b>                               |                         | 6 Poles               |
| <b>Usage Category</b>                        |                         | AC15                  |
| <b>Mechanical Life</b>                       | <b>Min Qty</b>          | ≥ 500                 |
| <b>Electrical Life</b>                       | <b>Min Qty</b>          | ≥ 100                 |
| <b>Operating Frequency</b>                   | <b>On-Off/Hour</b>      | Mech.240 Elec.120     |
| <b>Insulation Voltage</b>                    | <b>Ui</b>               | 690V                  |
| <b>Impulse Withstand Voltage</b>             | <b>Uimp</b>             | 6 kV                  |
| <b>Dielectric Strength (Body-Contact)</b>    |                         | 1890V AC              |
| <b>Dielectric Strength (Contact-Contact)</b> |                         | 3000V AC              |
| <b>Isolation Resistance</b>                  |                         | 10 MΩ Min. (500 V DC) |
| <b>Operating Temperature</b>                 |                         | -40 / +125 °C         |
| <b>Pollution Degree</b>                      |                         | 3                     |
| <b>Production Time</b>                       |                         | 31.12.1899 00:00:00   |
| <b>Serial</b>                                |                         | EB Series             |
| <b>Specifications</b>                        | Wide product variety    |                       |
|  | IP65 in closed position |                       |
|  | Universal inserts       |                       |
|  | Easy cabling            |                       |
|  | Different locking types |                       |
| Powdercoated metal housing                   |                         |                       |

**Standards / Certificates** TS EN 61984

Kontak Sayısı: 4x80A+2x16A+E